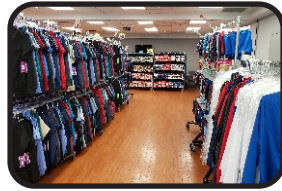


## ONLINE UNIFORM SALE

Shop online at [FirstUniform.com](http://FirstUniform.com)

Starts: Friday Feb. 19th, 2021 at 9 a.m. Ends: Tuesday Mar. 2nd, 2021 at 9 a.m.



**Payroll Deduction** or **Credit Card** payment options available

### To make purchases, follow these instructions:

**Step 1:** Go to [www.firstuniform.com](http://www.firstuniform.com)

**Step 2:** Begin Shopping

**Step 3:** Make selections and "Proceed to Checkout"

**Step 4:** Fill in home address for shipping.

*Make sure to type CMH in the "Company" box.*

*Please enter your CLOCK IN# in the "Order Comments: Employee ID" Box*

This information is needed to process the order correctly.

**Step 5:** Once your physical address, phone number and email addresses are complete, you will select from the Payment Methods below.

**For Credit Card** : *select payment method CREDIT CARD and then Follow the instructions on the website to complete your purchase*

#### **FOR Payroll Deduction:**

*You must select CMH PD1, CMH PD2, CMH PD3 or CMH PD4 to use payroll deduction.*

*\*DO NOT select "Payroll Deduction" from the drop-down menu as your payment option.*

By selecting [CMH PD1](#) - 1 Pay Period

By selecting [CMH PD2](#) - 2 Pay Periods

By selecting [CMH PD3](#) - 3 Pay Periods

By selecting [CMH PD4](#) - 4 Pay Periods

- There is no postage charge for purchases over \$99.
- *Reminder:* Remember that you must be signed up for Quickcharge to use payroll deduction for uniforms and shoe purchases.
- The payroll deduction limit is \$500.00
- If you have any questions about shopping online, please call toll-free to First Uniform's web support at 800-324-5890 ext. 1124

*Reminder:* Upon termination from CMH, any outstanding balance will be deducted from final paycheck. If there is an additional balance, employee will be billed.

**On-Line Prices are 10-15%  
Lower than Standard Retail Prices**

